

# VILLA MAGNA

## ECO-RESORT

### BLOCK C APARTMENT C.O.3 T1

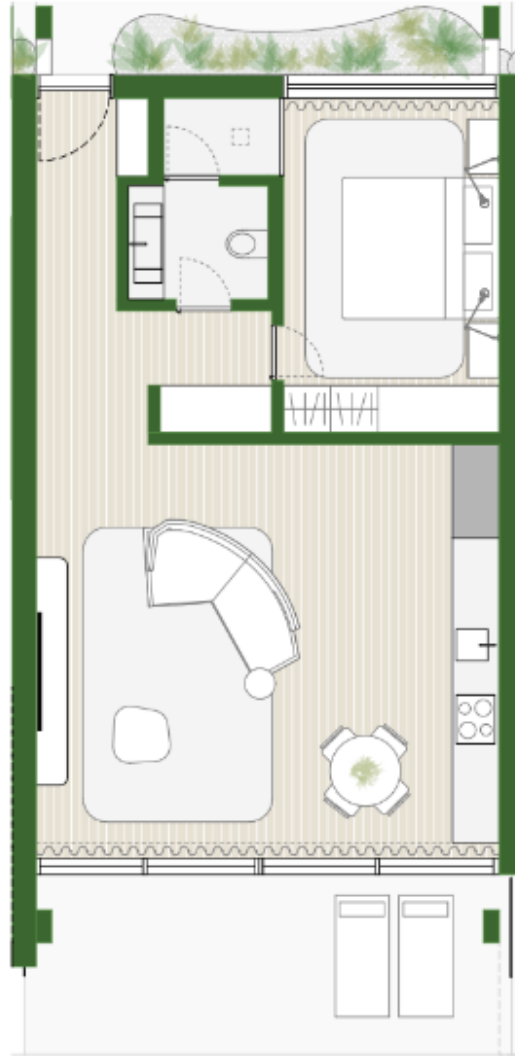
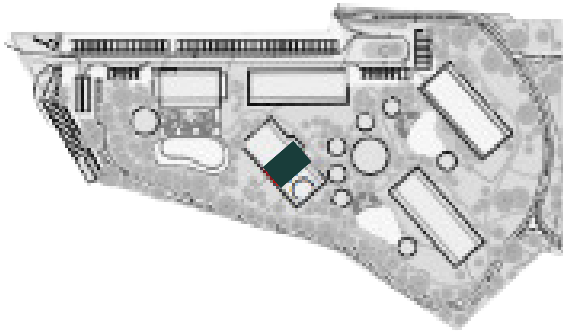
 GROUND FLOOR

 GCA\* 78.53 sqm

 1 PARKING SPOT

\* GCA - Gross Construction Area

### LOCATION



### AMENITIES



SWIMMING POOL



BAR



FULLY FURNISHED



HEALTH CLUB



2 RESTAURANTS



SPORTS VILLAGE

DEVELOPER

LIVING GROUP  
PAGANI CAPITAL, SGPS

ARCHITECTURE &  
INTERIOR DESIGN

GAVINHO