


# VILLA MAGNA

## ECO-RESORT

### BLOCK C APARTMENT C.1.3 T1

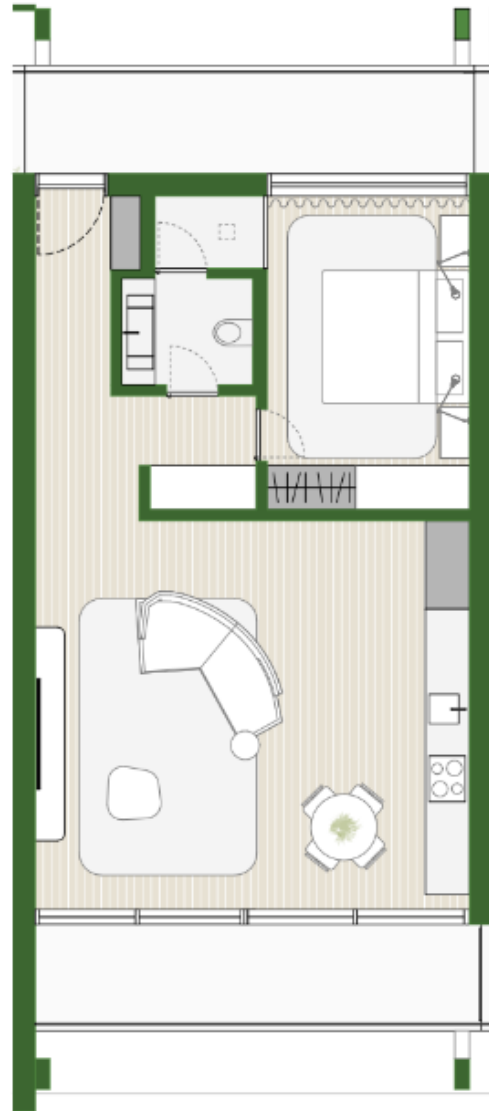
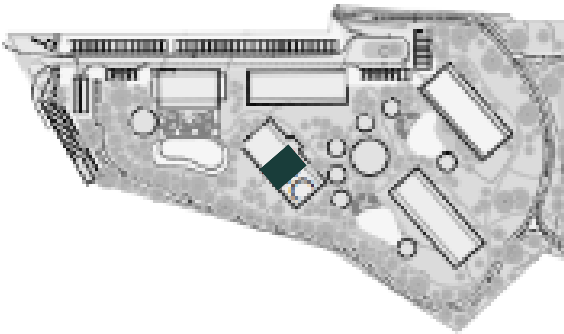
 FIRST FLOOR

 GCA\* 73.19 sqm

 1 PARKING SPOT

\* GCA - Gross Construction Area

### LOCATION



### AMENITIES



SWIMMING POOL



BAR



FULLY FURNISHED



HEALTH CLUB



2 RESTAURANTS



SPORTS VILLAGE

DEVELOPER

LIVING GROUP  
PAGANI CAPITAL, SGPS

ARCHITECTURE &  
INTERIOR DESIGN

GAVINHO

LEGAL NOTICE: The information and images contained in this plan are merely indicative and may be subject to changes or variations due to technical, constructive or legal requirements.