


# VILLA MAGNA

## ECO-RESORT

### BLOCK D APARTMENT D.2.5 TO

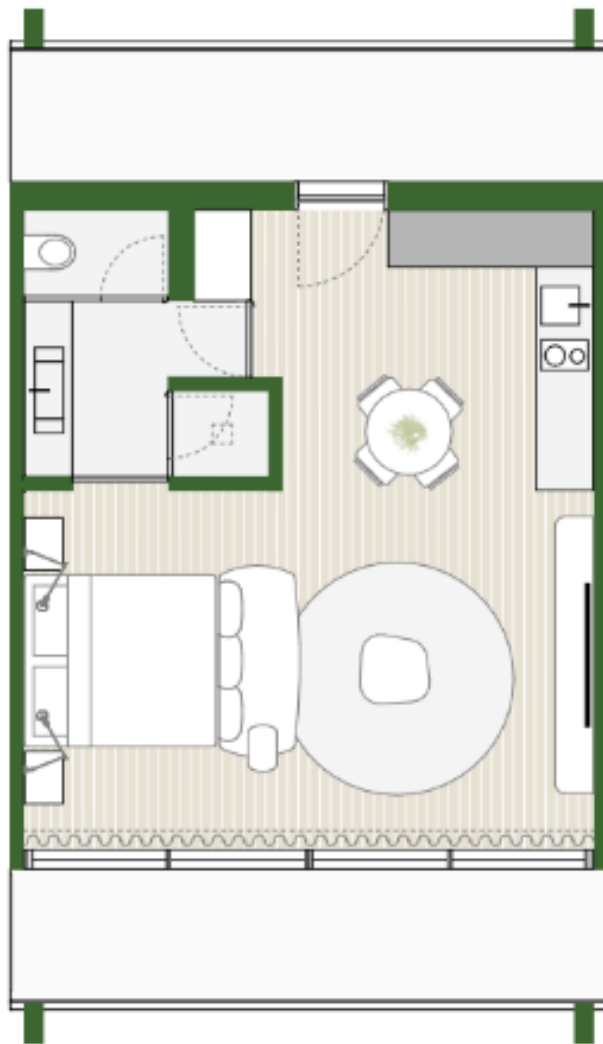
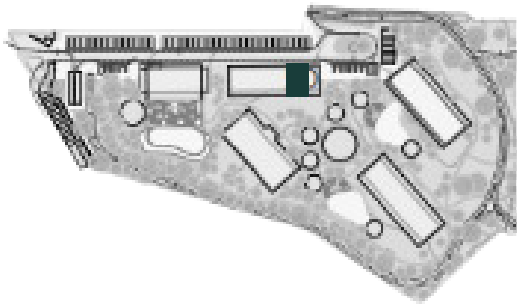
 SECOND FLOOR

 GCA\* 55.25 sqm

 1 PARKING SPOT

\* GCA - Gross Construction Area

### LOCATION



### AMENITIES

 SWIMMING POOL

 BAR

 FULLY FURNISHED

 HEALTH CLUB

 2 RESTAURANTS

 SPORTS VILLAGE

DEVELOPER

LIVING GROUP  
PAGANI CAPITAL, SGPS

ARCHITECTURE &  
INTERIOR DESIGN

GAVINHO