


VILLA MAGNA

ECO-RESORT

BLOCK D APARTMENT D.2.6 TO

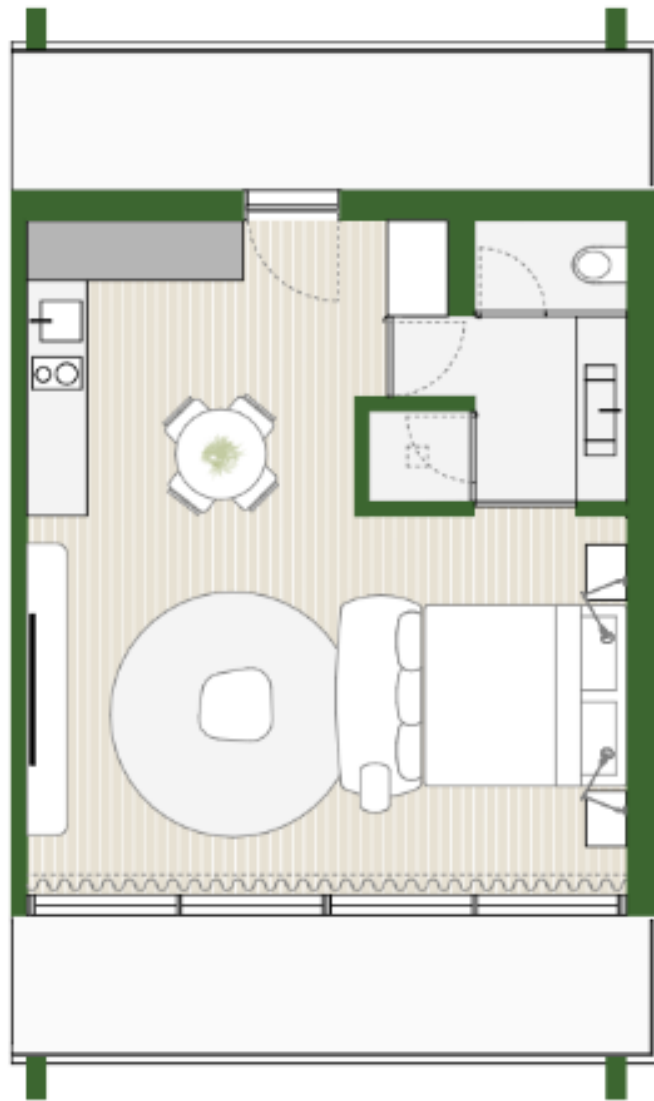
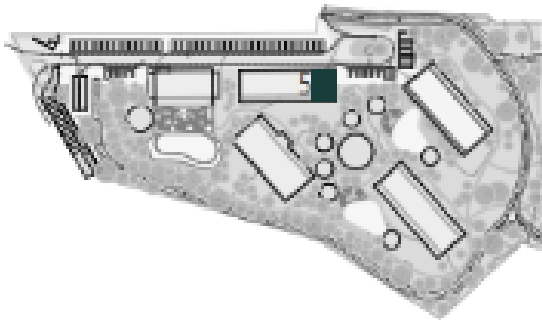
 SECOND FLOOR

 GCA* 55.29 sqm

 1 PARKING SPOT

* GCA - Gross Construction Area

LOCATION



AMENITIES



SWIMMING POOL



BAR



FULLY FURNISHED



HEALTH CLUB



2 RESTAURANTS



SPORTS VILLAGE

DEVELOPER

LIVING GROUP
PAGANI CAPITAL, SGPS

ARCHITECTURE &
INTERIOR DESIGN

GAVINHO

LEGAL NOTICE: The information and images contained in this plan are merely indicative and may be subject to changes or variations due to technical, constructive or legal requirements.